



One of the first activities sponsored by the Religious Affairs Committee and the Campus Ministry was the January '77 Challenge Retreat. Those participating in the retreat were (front row, left to right) Kathy Klingenger, Mary Carr, Peggy Brennan, Sharon McCarthy, Tim Matovina and Mary Beth Gianoli; (second row) Theresa Ferguson, Alice Mattingly, Ann Carr, Lisa Crull, Jan Gossett, Mary Jo Wessell, Ann Dillon, Chris Schlegal and Laurie Wolverton; (back row, standing) Deacon Gregg Alfvenger, Sister Sue Bradshaw, John Kleiber, Greg Holzer, Jim Ritzman, Denise Germonprez, Pam Gialanella, Marty Bretzer, Pat Mills, Father Blaise Czaja, Matt Sjoborg, Nita Reuter (Ma), Bill Reuter (Pa), Chris Miller, Bob Lantz and Sister Linda Bates.

# "Nursing Pioneers" begin at Marian

BY CATHY RISCH

Thirty-four "nursing pioneers" began classes at Marian College on January 10. These women are all members of the Career Ladder Program for Nursing, which is being sponsored by St. Vincent Hospital, Marian College and Community Hospital.

The students came to Marian as licensed practical nurses. Each student was required to take an efficiency test and an entrance examination to qualify for the program.

Career Ladder Program for Nursing is a three semester program with 16 to 18 transferable college credits allowed from previous training. It is the first program of its kind in the United States.

The reason it is titled the Career Ladder for Nursing Program is that upon comple-

tion of the prescribed courses, the students are able to take the State Board test for Registered Nurses, along with the acquisition of an Associate Degree. There is also the option to continue classes to earn a Bachelor of Science degree.

Courses for the program are designed especially for nurses. The nursing students are also required to take regular required classes such as English. One of the students commented, "To be a nurse you have to be able to communicate with people."

Some of the students are commuting from a distance of 45 miles. Two of the students are living on campus.

The students will be attending a 12-week summer session this year in order to complete the program by December 17. Clinical work will be done part-time during the session at Community Hospital.

## Another First for Marian

On Sunday, April 17, a student recognition dinner will be given at Marian College. This dinner, which has been established by the Student Services Committee with the financial backing of the administration, will honor those students who have achieved excellence in the areas of academics, clubs and organizations, sports, and numerous other areas.

The evening will begin with a special banquet in the cafeteria for award recipients, their parents, and faculty. Following the meal there will be the actual award ceremony in the Marian Hall auditorium

which will be open to all. A speaker yet to be announced will be present to give prominence to such an occasion.

The criteria for the specific awards will be determined by the specific group which will present the award. In the academic area, the recipient must be a senior with a grade point average of 3.5 in his major and an overall grade point average of 3.0.

This will be the first time in the history of the college that such a widespread recognition banquet will be given. The members of the Student Services Committee hope to make this an annual affair.

# The Phoenix

MARIAN COLLEGE INDIANAPOLIS, IN FEBRUARY 15, 1977

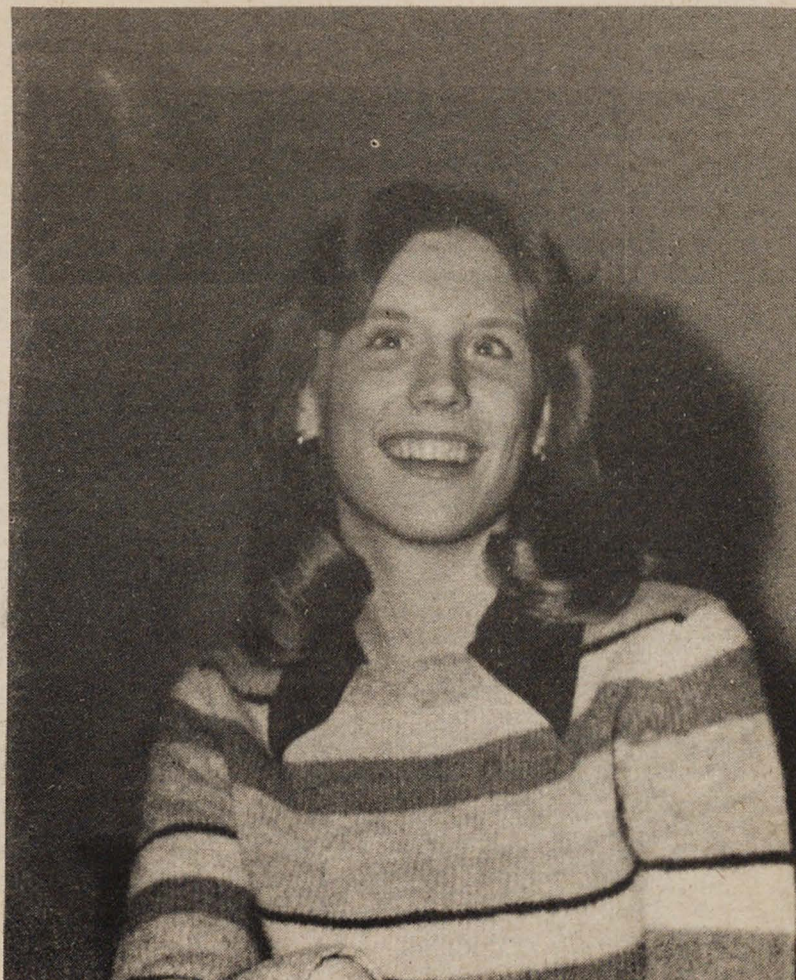
## ♥ SWEETHEARTS ♥

King



JIM DOSSMAN

Queen



DEB DURKIN



# Working together to find the answers

During the past few weeks, there seemed to be a common attitude affecting the Marian College community. This attitude, which seemed very negative in its beginnings, has now brought about positive results. Many began feeling "down" about the college for various reasons: the food service, E.L.S., poor maintenance, and the lack of communication and interaction between administrators and students, to name a few. These problems are not new, but they seem to have been magnified during the last month.

As a result, Student Board members and administrators met on two consecutive Tuesdays to discuss these problems and their possible solutions. One of the most favorable results of these meetings was the open communication which developed between the members of the student body and the administration.

Working together, administrators and students can effect a Marian College that will be satisfactory to both, as well as a college that will be appealing to prospective students. There have been improvements in many areas including food service, maintenance, and communication among students and administrators; but we must continue to work together.

The Administration is trying hard to work our solutions and now the students must keep their part. One big way students can show leadership concerns the E.L.S. program and especially the Saudis presently at Marian. American students, on the most part, are finding it hard to overcome their prejudices against anyone or anything which is foreign or different from them. It is a hard barrier, this prejudice, but once we try to overcome our prejudices, we find that the barrier is not as great and can be crossed.

Of course, it does take effort. We can't expect everything to come to us, we have to be willing to do our part. One way in which we can eliminate this barrier of prejudice is through a program which was initiated by Student Services.

This program provides the opportunity for American and E.L.S. students to come together each week for educational, recreational and social interaction. As of Friday, February 11, 1977, four members of the faculty and student body had signed up for this program.

We must learn that there are no easy answers, but the answers are there if we will take the time and effort to find them.

-- Jackie Thiesing

## "Something is rotten...!?"

"Something is rotten in the state of Denmark," is a mild phrase to summarize the recent Student Board survey. The results of this poll truly summarize the Marian College student's feeling that their campus is in a devastating condition.

I feel it is necessary to look closely at the college policy regarding outside groups on campus. 81% of those polled felt that these groups were given priority to full-time students. This startling statistic represents an attitude that has been long in existence and is being overlooked by the administration. A small college which claims to provide a communal atmosphere is letting this atmosphere be destroyed instead of enhancing it.

I personally cannot complain about the E.L.S. students but this survey has demonstrated the hostile feelings toward such groups on campus. But what has been the administration's answer? According to Curt Stoll's remarks in the Carbon regarding the Student Board survey, the administration has said that without E.L.S. each full-time student's tuition would be raised \$400.

The administration is actually saying put up or pay up. These men and women know very well that such a tuition increase would be fatal to Marian College and are trying to use this figure as a scare tactic. If Marian College has to depend so heavily on a group such as E.L.S. for its existence and denies its full-time students their rightful share then the college should close its doors.

I would like to see facts regarding this \$400 tuition increase figure and as co-editor of this paper I would assure the publication of such a figure to the whole campus.

It is certainly apparent by the Student Board Survey that something has gone awry at Marian College. The whole matter needs to be brought out into the open. The real truths have been hidden too, too long.

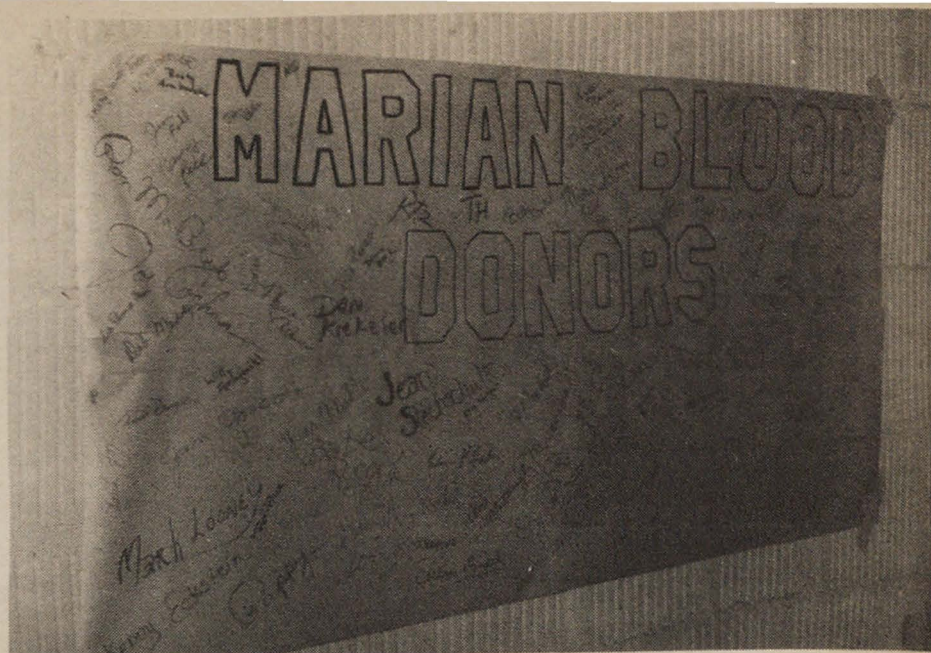
-- Bob Melevin

## PHOENIX

Published by students of Marian College, 3200 Cold Spring Rd., Indianapolis, IN 46222.

The views of this publication are those of the individual students of its staff and do not necessarily present those of the College community.

Co-Editors	Bob Melevin, Jackie Thiesing
Staff Writers	Terry Dailey, Ken Eckstein, Renee Grontkowski, Bob Hahn, Jill Krider, Mary Joe Kuehr, Linda Niesen, Cathy Risch, and Curt Stoll
Artist	John Kleiber
Photography	Ken Eckstein, Tim Bader, and Jeff Roach
Business Manager	Mike Brodnik
Advisor	Paul G. Fox, Director of Public Information



On February 4, 1977, the Marian community donated 52 pints of blood at the blood draw sponsored by Clare Hall. Chairwomen for this year's draw were Terry Densberger and Lynne Holzhausen. Anyone who wishes to donate blood and was unable to on February 4, can do so by going down to the Central Indiana Regional Blood Center at the corner of Meridian and 29th Street. Be sure to tell them you are donating for the Marian College blood club so that Marian will get the credit.

## Career Info. Center open and ready

As promised earlier, the Career Information Center is now set-up, organized, and available for student use. The change is unbelievable. Just ask those who worked on it. Following is a list of the major categories of materials in the Center.

- Alphabetized Undergraduate Catalogs
- Alphabetized Graduate Catalogs
- Alphabetized Graduate Programs
- According to Academic Major
- Tear Off Mailers on Graduate Schools
- Alphabetized Files on Companies and Businesses
- Summer Employment Opportunities
- D.O.T. Filing System on Occupational Information
- State Employment Service — Merit System's Openings and Applications
- Federal Employment Information
  - Pace Exam
  - Foreign Service Exam
  - IRS Materials
  - Civil Service Journal
- Armed Services Career Literature
- Career Opportunity Magazines
- Employment Opportunities in Specific Areas
- Employment Facts Binder

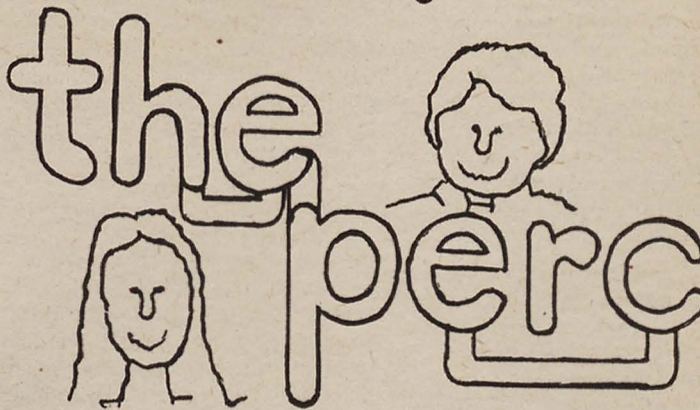
- College Placement Annuals
- Occupational Outlook Handbook
- Occupational Outlook Quarterly
- 1973 Guide to Graduate Schools
- How to Prepare for Graduate School (G.R.E.)
- Job Listings in Teaching, Business, Alumni Positions, and Non-degreed Openings
- "Free-Bee" Materials

Much time, energy and effort has gone into its preparation by myself and others. I hope we are "repaid" by your use of the center. We still need more materials but we have a good start and a system which allows additional materials to be included as we receive them.

If there are specific items you need or want, let me know by filling out the request form in the Center or by telling me, and I will make every effort to obtain them. My personal thanks to Barbara, Peggy, Susan and Susan for all their hard work and support.

The center is not intended as a "show-case" but as a useful resource in career decisions and job placement. Please make use of it.

Attention commuting students !!!



A great place to take a break ...  
... before or after ...  
... Evening classes .

open 8a.m. till 11p.m.  
ground floor SAC



# It's a Rush!

The members of the Marian College chapter of Alpha Phi Omega (APO), the national coeducational service fraternity, invite you to attend a Rush Party on the evening of Wednesday, February 16, at 8:30 p.m. in Doyle Hall lounge. Refreshments will be served after a brief introductory presentation.

The Marian College chapter of Alpha Phi Omega was initiated last spring in cooperation with the chapters from Indiana Central University, Butler University and IUPUI. Alpha Phi Omega has grown to be the largest national fraternity in the country. APO is not a social fraternity, and does not maintain housing for its members. Instead, they are bound in the spirit of Friendship, Leadership and Service.

APO, through its service programs, offers a unique opportunity of working with administration and faculty on a personal level. It provides a chance to be of genuine service to the campus, the community, and the nation through such projects as the annual charity Christmas raffle, the canned food, clothes and toy drive, the organ donor drive for the Kidney Foundation, and the lollipop sale to raise funds for the Kidney Foundation. Mostly, the service program offers a chance to

experience that certain satisfaction from knowing that someone else is so much better because of you.

Alpha Phi Omega is not, however, an all-work service organization. If it were, then it could not call itself a fraternity. APO offers a varied social program designed not only for many good times, but also allows for the building of character. The social functions include various activities including parties and off-campus outings.

Membership in APO is open to all men and women. There is a pledge period in which the pledges learn about the fraternity and enter into the various chapter programs. There is no hazing. Also, because APO does not have a house, APO's can join other fraternities.

We therefore invite you to consider Alpha Phi Omega, and we look forward to meeting you at the Rush Party on Wednesday, February 16, at 8:30 p.m. in Doyle Hall lounge. If you would like to pursue this further, please contact any of the following APO members: Brian McIlwee, Renee Grontkowski, Michele Mravinac, Alice Mattingly, Jackie Thiesing and Mike Bauer.

## Marian Knight - regular season coming to a close

BY CURT STOLL

The Marian College Basketball Knights have found the second half of their schedule to be a bit of a disappointment thus far. The Knights have managed only one home victory to five losses.

The lone Marian victory was against the Grenadiers of Indiana University - Southeast. In that contest, the Knights managed to squeeze out a 65-64 victory.

The Knights chances for a District 21 playoff bid dimmed also. Marian dropped two crucial games against Bethel College and then fell to Franklin, the number one team in the district, 58-55.

In the fight for the mystical, city collegiate title, the Knights were once again frustrated. After a superb first half

effort against Indiana Central, Marian could not maintain the fire power to keep charge of the contest. Against IUPUI, the Knights were overpowered by a much bigger and more experienced squad. The Knights were pulled down again by the Indiana University South Eagles.

Marian's only post-season hope is contained in a victory tonight against Franklin College. The game will be played at Franklin. This is the only District 21 foe remaining on the schedule. How well the Knights do against teams outside the district could also be a factor.

As a reminder, all remaining home games will be played in the Clare Hall gym. The last home game will be played on February 19, against Thomas More College at 7:30 p.m.

## Women's Varsity Sports - getting it together

BY TERRY DAILY

The women's varsity athletics, although limited in scope to volleyball and basketball, provides those more gifted individuals to combine their talents and develop their skills. In addition to physical benefits, such opportunities allow for self-expression, personal character development, self-discipline, and that team spirit and unity that are omnipotent.

Although Volleyball punchers scored a total of only five points against Taylor in their first match, the women faced these opponents again and accumulated a total of 22. At IUPUI, they played better than ever through team work and displayed plenty of spirit at the same time.

The last home game against Indiana Central University was a well-deserved victory for these women, as was the win over IUPUI in the Indianapolis Tournament.

By tournament time, the novice team had blossomed after conquering the University of Evansville and putting up a good fight with Anderson. During its final game of the tournament, Marian played the #1 team in Indiana - Goshen!

"There was pain, suffering, and much sacrifice involved, transcended by the experience of total immersion, yielding an exstastic feeling that made it all worthwhile," commented Linda Niesen, captain of the team. The Women's Volleyball team deserves recognition and applause for their granting Marian their individual and team efforts and talents.

The tournament is at Taylor University on February 25 and 26. Come and see these women play basketball - witness history in the making! Improvement is evident due to team talent and a terrific coaching job by Coach Clara Caito. The team managers are Dee Palmer and Mary Beth Zimmermeyer. Players include Jane Aust, Elaine Bachman, Holly Bruns, Kathy Collins, Maggie Kochert, Tina Miller, Linda Niesen, Kathy Redelman, and Amy Stinger.

Players included:

Bonnie Fox.....	Senior
Michelle Graves.....	Freshman
Vickie Hennessey.....	Senior
Sharon Horan.....	Senior
Maggie Kochert.....	Sophomore
Tina Miller.....	Freshman
Linda Niesen.....	Senior
Amy Singer.....	Sophomore
Kathy Sullivan.....	Sophomore

## Marian Soccer Club looking ahead . . .

BY CURT STOLL

Facing a rebuilding period, the Fall '76 Marian Soccer Club entered its fourth season. After losing six starting seniors, the Knights looked to new talent to help them through the season.

Butler University was the first opponent, and the Knights fell to defeat. In the following games, Marian could not find the offensive punch and their record fell to 0-6.

The Knights are looking farther ahead than the 1976 season at this point. With

continued experience and work, the younger players are improving.

Marian is attempting to build a soccer program which will be able to turn inter-collegiate in the future. Through the hard work of many individuals involved in the program, it is a definite possibility. The quality of the schedule played is increasing along with the number of teams.

We congratulate all those who play and work for the Soccer Club, and enable it to continue each year. We are looking forward to the '77 season.

## Note of Thanks

The Day Student Association would like to take this opportunity to thank all those who supported and attended the Winter Dreams Dance on Friday, January 14, in the Allison Mansion. The event, which was funded by the Student Board, raised \$261 for the purpose of making Marian College more accessible to present and future handicapped students.

In the coming weeks DSA officers and administration officials will discuss what specifically will be done with the funds. If you missed the dance, which is unfortunate because the 3rd Generation Dance Band was great, donations can still be given to the Business office or DSA officers.



Members of the 1976-77 women's varsity basketball team are (front row, left to right) Dee Palmer, manager, Maggie Kochert, Jane Aust, Elaine Bachman and Mary Beth Zimmermeyer, manager; (back row) Tina Miller, Kathy Redelman, Amy Stinger, Linda Niesen, Holly Bruns and Coach Clara Caito.

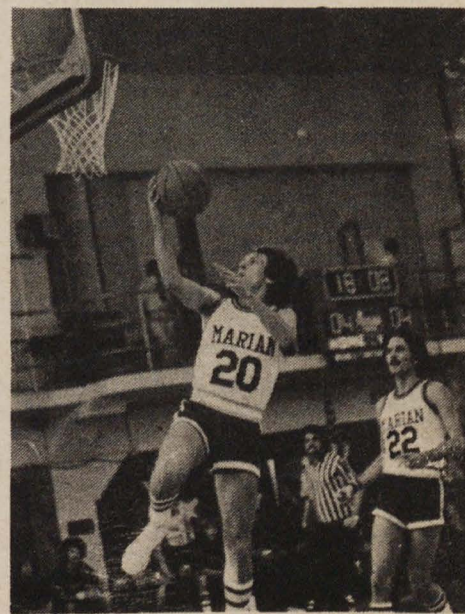
The Women's Varsity Basketball team is nearing the end of a respectable season with a 3-5 report card. Game records boast wins over such tough teams as ISUE (twice) and Butler University. Losses were to Indiana Central (twice), IUPUI and Franklin (twice).

One scheduled match with Grace College was cancelled due to weather conditions, but these ladies did not quit cold. On February 5, the Franklin Game was a justly deserved Parents' Day for the team members, managers, and Coach. Although Marian was down by 24 points at halftime, they came back to lose by only 12 in the end.

Half-time show included presentation of flowers to the parents by Dr. Phyllis A. Jacobson and Dean Woodman, who were escorted by Bonnie Fox and Tom Hornback. Linda Kleeman then presented her "Raggedy Ann" act after which Ginny Belles performed her "Margaret" role. Merle Tebbe was the announcer throughout the game which added to its excitement!

There are three games left to these women's schedule which include:

Feb. 15 IUPUI	6:00p.m. T
(at the Coliseum)	
Feb. 19 Oakland City	10:30a.m. T
Feb. 22 Hanover College	6:30p.m. H





# HOMECOMING

## 1976

### "It's a Small World"

sponsored by

**Marian College Booster Club**

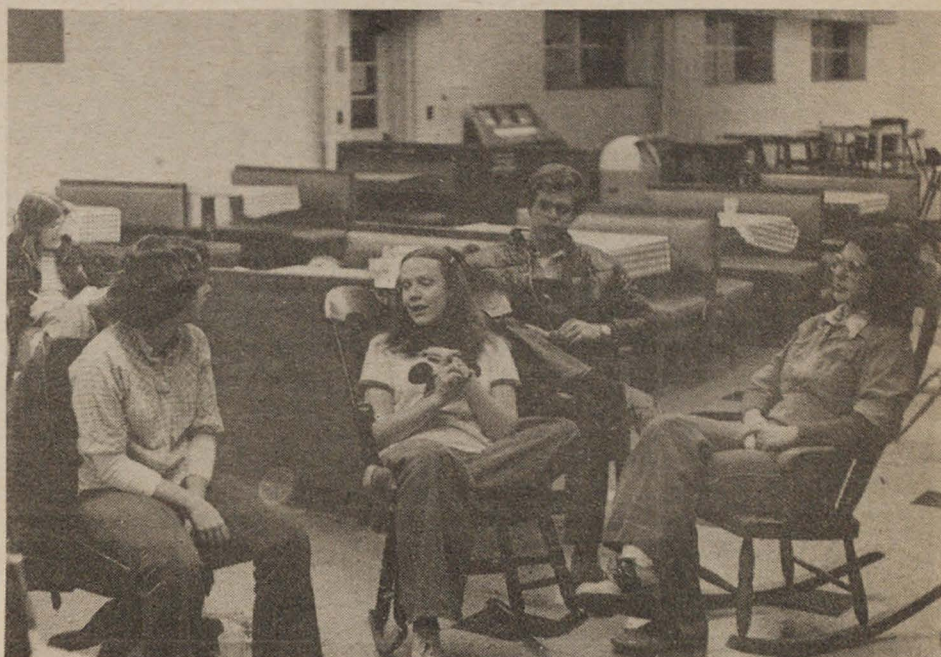


Members of the 1976 Homecoming court were (left to right) freshman, Frances Gigliotti; sophomore, Jane Craven; juniors, Nancy Campbell and Frank Ziegler; seniors, Queen Lucy Lorenz, and Mary Clare; sophomore, Mary Beth Grannon; and freshman, Mary Beth Stoll.



Intramural football champions for 1976 were the Little Kings. Team members included (kneeling, left to right) Joe Horan, Dan Coe, Dan Krekeler, Pat Durkin and Dave Papandria; (standing) Merle Tebbe, Ken Wright, Bill Doherty, John Ruffra and Jerry Disque. Little Kings overcame the I.E.T. in the championship game.

# SCRAPBOOK '76



ROCKING CHAIR MARATHON — 4-WAY TIE



VARIETY SHOW



HOMECOMING PARADE