



It's too hot!

The

Carbon

Volume 8, Number 1

A Student Publication of Marian College

6 September 1990

Activating the reserves could affect up to 187,000 collegians

(CPS) -- As many as 187,000 college students across the country had their fall term plans cast into doubt August 22, when President George Bush said he would soon call up military reservists to support and replace troops already sent to the Middle East.

If and when the call comes, the students would have to leave school abruptly, sometimes unsure if they will have a place when they return or if the tuition money they paid will be wasted.

No one knows exactly how many of the reservists subject to being called to active military duty are college students.

Joe Hanley, spokesman for the U. S. Army Reserves, estimated that 61 percent of his group's 579,000 members are full- or part-time college students.

The other branches of the military do not keep figures on how many of their reservists are students.

Colleges themselves typically do not know how many of their students are subject to the military call-up.

When Iraq invaded Kuwait, its small but oil-rich neighbor on August 2, life became uncertain for both students and their schools.

Soon after, President Bush sent 40,000 U. S. troops to Saudi Arabia to defend against a possible Iraqi invasion of that country.

Originally Pentagon officials thought only 100,000 soldiers would be needed, but raised the figure to 250,000 a week later.

On August 22, Bush said he would activate 40,000 reservists to support and replace the troops he had already sent to the Persian Gulf Region. It was the first time reservists had been called to active duty since the Tet Offensive in Vietnam in 1968.

Suddenly campuses were forced to ponder a significant number of students and staffers leaving mid-semester to serve. Course sections could lose their instructors. School finances could be disrupted if fewer students were around to pay tuition and dorm fees. Students themselves could have their studies interrupted, without a guarantee of being able to resume them when they returned to civilian life.

Although there is a federal law that protects the jobs of workers who are called to duty, there is no law protecting students, Hanley said.

To ease uncertainty among student reservists, Purdue University published a detailed letter assuring students they would get their fees refunded and earn a certain amount of credit, depending on when they withdraw.

Smaller schools said they would deal with the situation on a case-by-case basis.

"If any (students) were called up, we would do all we could possible to make their re-entry after serving their country as easy as possible," said Edward Macias, provost at Washington University in Missouri.

Meanwhile the student reservists and their families try to prepare for what may lie ahead.

Editor's note: The Carbon would like to do a story on the reserves and/or spouses of reserves who are Marian college students and staff. The college itself, like most, has no record of enrolled reservists. If you are in the reserves or are married to a reservist, please call Dallice at ext.290 or 671 or leave your name and phone number in the Carbon mailbox (located in the faculty mailroom). Thank you.

New Student Activities and Resident Hall Director arrives

by Kimberly Blair

Many new faces are among this semester's faculty and staff. One of those faces belongs to Jan Mahon Leap. She is Director of Student Activities and Resident Director of St. Francis Hall. In student activities Leap will be working with the MCSA and other groups on campus. As resident director she is in charge of the day-to-day operation of St. Francis Hall.

Leap graduated from Marshall University, Huntington, West Virginia in 1986 with a bachelor of science in Recreation Administration. She became Coordinator of Student Activities at Marshall University in 1987. In 1989 she received her master's degree in counseling/ student personnel from Marshall University.

At Marian, some of her immediate plans are to observe and participate in the current system for activities and to work closely with MCSA in the evaluation of the current system's effectiveness and to work on leadership development in the MCSA and other campus organizations. Long-range plans include creating a fully operational student activities office.

Leap states that she would "like to have the students and staff recognize the student activities as a learning lab where they can apply and practice the different concepts and ideas found in the classroom and prepare for the working world."

Jan is new to the Indianapolis area, she grew up in southern West Virginia. She is married to K. Edwin Leap II



photo by T. Snyder

Jan Leap

("Ed") who is a resident physician in emergency at Methodist Hospital. They live in the Resident Director's apartment, located in St. Francis Hall.

The oldest of four children, Leap talks about her impression of the college, "Marian is an exceptionally friendly and caring school. Everyone I have met has been very warm, thoughtful and extremely helpful. The students seem to care about the school and are pleased to be here. They also appear to be willing to learn and are eager to participate in the activities around."

Get your GED on TV!

Adults who have not graduated from high school will soon have a second chance. Beginning the week of October 8, 1990, the GED ON TV adult education program will offer a series of 42 half-hour television programs to be broadcast on WFYI, Channel 20 in Indianapolis, as well as other public television stations in Indiana. The programs cover the reading, writing, social studies, science and math skills needed to pass the GED high school equivalency test. The programs present dramatized learning situations with casts of characters, dialogue, and humor and are designed for adults.

Many adults are very uneasy about letting people know that they did not graduate from high school. GED ON TV will make it possible for these people to enroll by telephone. The student will call an "800" toll-free telephone number for information. A pre-test and workbooks will be mailed so that the

student does not have to go into a school or library to enroll.

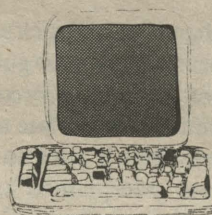
When an adult calls to enroll they will be mailed a packet of information that must be returned with an \$18 check or money order to cover the costs of the three workbooks, pre-tests, newsletters and post-tests. At the end of the series the student will be mailed a voucher worth \$18 to pay for the GED test.

Local public television stations will broadcast two lessons each week. Throughout the series, students are encouraged to call the "800" hotline to ask questions about things they don't understand on the TV or in the workbooks.

Students should call right away so that there will be time to mail pre-tests and workbooks before the series begins. For information about GED ON TV and to learn how to enroll, adults should call 1-800-248-7999.

Just a thought

When do you think the computer lab will open? Or will it?!



Inside the Carbon

Editorial	2
Tennis Preview	3
Cartoon	3
Crossword	4
Notes	4

On campus

Friday -- Coffee House, 9pm

Saturday -- Cross Country

Saturday -- Volleyball (A)

Sunday -- MCSA Car Wash

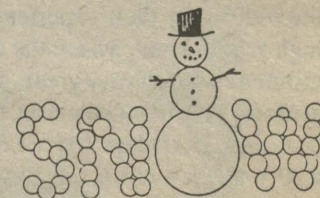
Tuesday -- All School Mass, 11:30

Tuesday -- Mature Living Seminars

Tuesday -- MCSA Meeting

Wednesday -- Interview Workshop

Wednesday -- Sis Get-Together



Editorial

Is that really the cafe?

I was certainly astounded by the changes awaiting me at Marian College this year. First and most noticed seems to be the change in the cafeteria. I guess someone finally did read all of those surveys and decided to give the students what they wanted. I want to commend the cafeteria personnel on their new attitude and long awaited upgrade of the facilities.

The atmosphere has moved from tables sticky with old varnish to nice blue table-clothed tables with a distinctive flair. The old tray and silverware holders have gone the way of the dinosaur and other bulky creatures, to allow for a stylish and much less cumbersome holder. The blue and yellow walls draw your attention now, instead of the occasional cockroach frantically scurrying towards the ceiling.

Even the new arrangement of things seems logical and is much more eye-appealing than the past design.

The employees seem much more alive and content; there is one man I have yet to see frown. The employees also seem to lend a professional air to the cafeteria; they no longer act as if they worked at McDonald's.

I have also found that the food is a far cry from the scorched, cold non-describables of yesteryear. My mother even got a letter asking for favorite recipes that the cafeteria might be able to use. (Mom, I hope you sent them the recipe for slumgullion!)

The changes in the cafeteria go to show that it is never too late to change, or upgrade. I also think that they, like other departments and people on campus, are starting to realize their potential and act upon it. The entire campus is changing before our eyes. I welcome this change.

Dallice Hesselgrave,
Editor

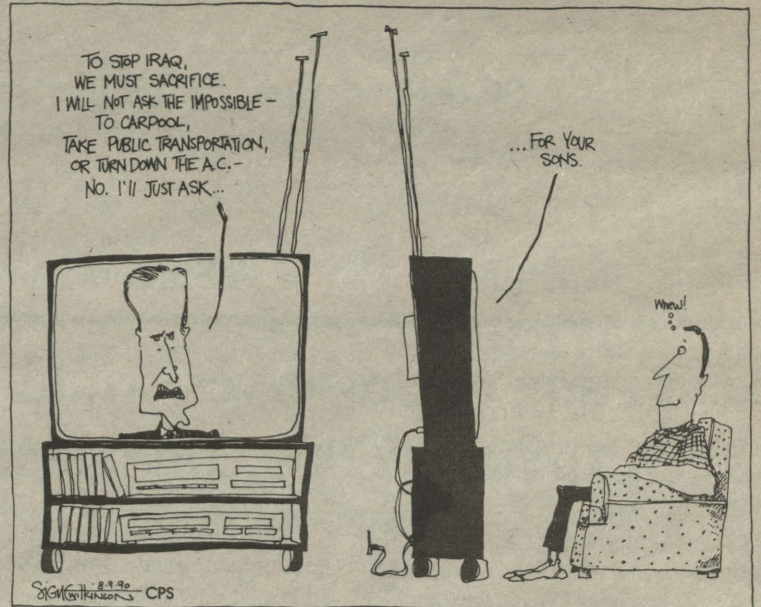
An advisor's welcome

Fall is here and that must mean school has begun again. Of the many activities school calls forth, one engaged in less and less these days (thanks to computer-driven spell-checkers) is thumbing through a dictionary. I was doing that recently and came upon two words, one after the other, words I had not known before. Word one was provinciate, a verb meaning "to reduce to the condition of a province or of provincials." A provincial is a person figuratively from the sticks, whose world view is rather narrow. The other word was provine, also a verb, meaning "to propagate by layering." When I saw these words, one after another, I thought, how interesting, since they are almost opposites of each other when applied to a school. A school takes someone who may have been provinciated and, through exposure to knowledge, provines that person. What is each new year at school but an additional layer designed to help propagate that individual through his or her chosen course in life?

We at The Carbon look forward to an exciting year in which we all grow some, learn some, and find or recover that which makes life worth living. We look forward to serving you, stimulating you, informing you, and perhaps provoking you. By doing so, we hope that by the end of the school year, it will be said that rather than provinciate, in your time here you fruitfully and fully provined.

Dr. Brian Adler

Welcome back!



THE CARBON

Marian College
Indianapolis, IN 46222

Editor
Dallice Hesselgrave

Associate Editor
John J. Mathis

Production Editor
Barbara Crock

Business Manager
Doug Lecher

Advisor
Dr. Brian Adler

Staff

Tina Kunkler, Donna Sanders, Kimberly Blair, Troy Snyder, Susan Schuppan, Shannon Gaughan

The Carbon, a source of news and information as well as an open forum for the Marian College Campus community, is not an official publication of Marian College and does not necessarily reflect the views of the college administration, faculty, or editors. Readers are invited to submit timely and relevant letters of opinion to the editors. Such letters should not exceed 150 words and must include the author's name and phone number. For verification purposes the letter must also be dated and signed. Telephone numbers will not be published, nor will anonymous letters be published. Letters may be edited for clarity and brevity. Editors have authority to reject any letter they feel to be potentially libelous, obscene, inflammatory, or in poor taste. Ordinarily such letters should aim to address issues, clarify events, promote understanding, or clearly identify what is going on in an event, issue, or scene. No guest editorials will be accepted unless explicitly solicited by the editors. Unsolicited pieces will be treated as letters to the editors. Letters to the editors must be turned in to the Carbon's mailbox in the faculty mail room by 12:00 noon, Friday, the week they are to run.

Any campus club or organization sponsoring an event can advertise in the Carbon at no charge by submitting a 4"x5" ad to the Carbon in the Carbon mailbox in the faculty mailroom one week before the ad is to run. If typesetting is required, the ad must be submitted two weeks in advance, and a fee will be charged. The Carbon will run the ad for the two weeks preceding the announced event.

Events or informational notes can be submitted for the Knightly notes by campus organizations or persons. The text must be 50 words or less. The deadline for Notes is Fridays at 12:00 noon in the Carbon mailbox. The editors reserve the right to edit all advertisements and notes submitted.

Many Gifts, One Spirit

Opening School Liturgy
Tues., Sept. 11th
11:30 am
Marian Hall Chapel

PUZZLE SOLUTION

C	A	P	A	D	O	R	E	A	I	R
A	G	O	C	E	D	A	R	I	D	A
D	E	P	A	R	T	P	I	L	L	O
			D	E	E	M	S	I		
A	M	I	D	R	O	E	T	O	P	E
D	A	L	S	M	O	T	H	E	R	E
A	L	C	H	I	E	A	R	T	E	
G	A	L	L	A	N	T	R	Y	D	A
E	R	I	A	E	R	N	O	L	L	A
			M	M	Y	A	R	D		
R	U	S	S	I	A	L	A	D	D	E
A	L	E	S	P	E	L	T	O	W	E
G	E	T	S	T	A	Y	S	T	E	D

BAND NEEDS YOU!

Attention Students: The Marian College Band is looking for members. Regardless of what instrument you play, or how long it has been since you have played, we would love to have you! The band is mostly made up of non-music majors. We are willing to work with you on your level.

The band at Marian is different than any other band you have been in. The main difference is that we have fun! Many students have been burned out by their experience in high school band, where the commitment is often very great. Here at Marian the band meets on Tuesdays and Thursdays from 5:30 to 6:30 p.m. It's not a big commitment.

Our band is a jazz/rock ensemble. We use an electric bass guitar and a drum set; we have a very contemporary sound. It is too late to sign up for credit, but it isn't too late to have fun. We plan to have "jam sessions" where the band will play and so will smaller combos. We are also learning how to improvise, which is a skill that can, and in most cases, is learned.

Once again, we need all instruments, (we're looking for a bassoon player for a woodwind quintet) and we can provide the instruments free of charge. If you have any questions please call Jim Lerner at Ext. 302.

Extracurricular Activities

Tennis: New Faces, New Drive

by Shannon Gaughan

This year's men's and women's tennis teams hope to improve under the guidance of first year coach Tony Natali. Natali is optimistic about this year's season, "Spirits are high and they're working very hard."

This year's tennis teams each have four returning upperclassmen. The men's team has five freshmen, while the women's has four. Natali feels this is a strong point, "there's experience with some youth."

Natali also commented on the strength of the men's doubles players. The women's specialty will be depth; because of the number of women playing this year, Natali will be able to alternate players, letting each use their strengths to benefit the team. Both teams possess a good attitude.

This is Natali's first collegiate tennis coaching experience. In the six years before coming to Marian, he gave private lessons. Natali commented on the switch from private lessons to coaching, "I'm very excited to be here. We'll be a top notch program."

The men's team opened their season Thursday, September 6 at Anderson. The women will begin their season at Tri-State on Saturday, September 8.

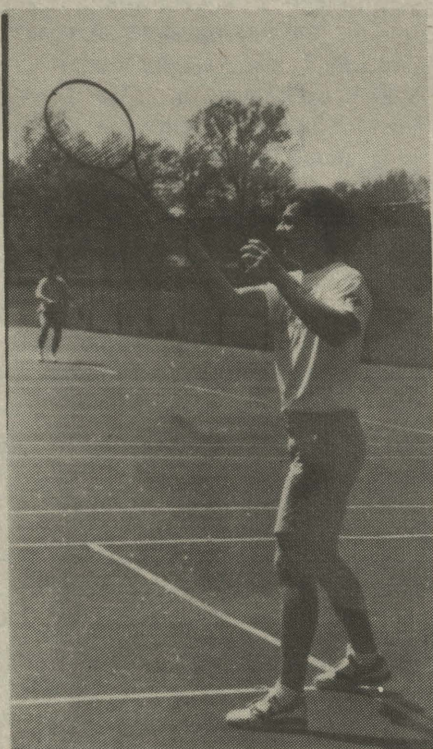


photo by T. Snyder

Practice continues. . .
Matches begin.

New woman leadership organization forms on campus

This year a new organization was introduced at the Activities Fair. Epsilon Sigma Alpha International, founded in 1929, is a women's leadership service organization. Through leadership training, educational programs, service work, and social activities, Epsilon Sigma Alpha promotes confidence and competence among its members.

Epsilon Sigma Alpha translated from the Greek means "pursuit of learning." The Greek initials also stand for the sorority's main purpose: education, service, and association. Each individual chapter chooses its own philanthropic projects. St. Jude Children's Research Hospital in Memphis, Tennessee has

been the international project since 1972. ESA also supports Easter Seals and Camp Riley for the handicapped in Bradford Woods. In addition to their philanthropic projects, ESA collegiate chapter members design their own educational and social activities as well.

Any woman, 18 years or older is eligible for membership. Epsilon Sigma Alpha has 1,500 chapters worldwide that include 25,000 women.

The next informational meeting will be held Sunday, September 9 at 7:00 p.m. in the nursing department conference room (basement of St. Francis Hall).

Residence Hall Liturgies

Every Thursday evening

St. Francis Hall Chapel

9:00 pm

Come as you are. . .



The Carbon Needs:

energetic writers

photographers

dark room help

ad collectors

production help

& your suggestions.



Staff meetings are held each Monday in the Carbon Office, which is located in Kavanaugh Hall. Deadlines will be strictly enforced for all contributors -- staff, faculty, and students. They should be placed in the Carbon mail shelf before 3:30 on Monday of each week.

For more information please call

Brian Adler, ext. 280

Dallice Hesselgrave, ext. 671

Barb Crock, ext. 134

**Do You Want Drugs Out Of Your Neighborhood?
It's Your Call. Report Drug Activity. 236-DOPE.**

Marion County Prosecutor Stephen Goldsmith

ZOO U. by Mark Weitzman



"See? Your annual tuition is much lower when you figure it in dog years."

Crossword Puzzle

ACROSS

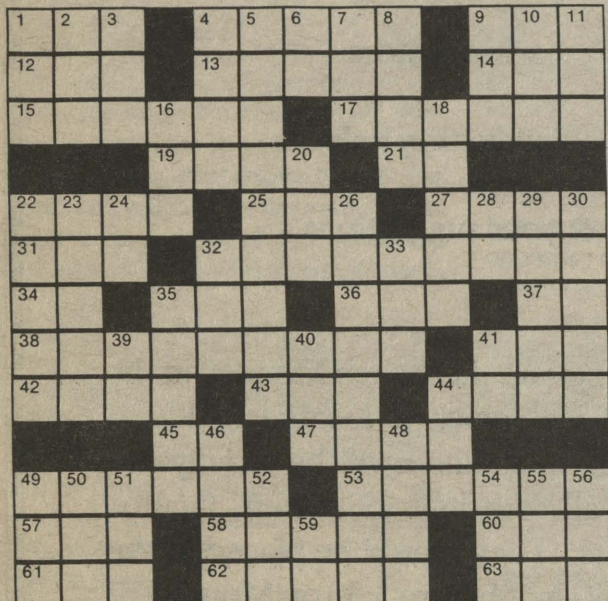
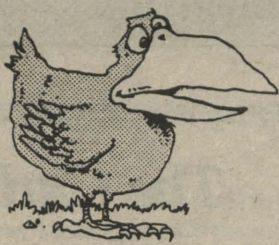
- 1 Mortarboard
- 4 Worship
- 9 Ventilate
- 12 Time gone by
- 13 Evergreen tree
- 14 Mountain on Crete
- 15 Leave
- 17 Headrest
- 19 Judge
- 21 Yes, in Spain
- 22 Among
- 25 Fish eggs
- 27 Drink heavily
- 31 Pigeon pea
- 32 Hushed up
- 34 Indian mulberry
- 35 Greek letter
- 36 Otic item
- 37 Symbol for tellurium
- 38 Heroism
- 41 Obstruct

- 42 Silkworm
- 43 Sea eagle
- 44 Spanish pot
- 45 Millimeter: abbr.
- 47 Play area
- 49 Soviet Union
- 53 Climbing device
- 57 Saloon stock
- 58 Variety of wheat
- 60 Be in debt
- 61 Obtain
- 62 Remains
- 63 Spread for drying

DOWN

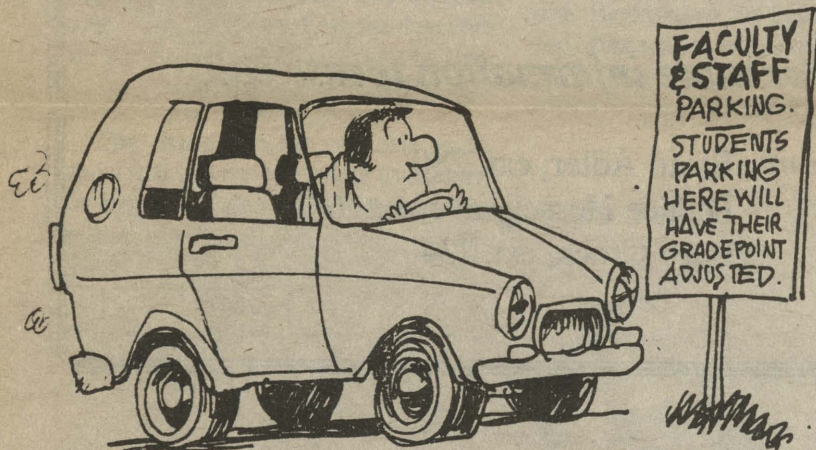
- 1 Uncouth person
- 2 Mature
- 3 Burst
- 4 Land measure
- 5 Decide
- 6 Hypothetical force
- 7 Knock
- 8 Goddess of

- discord
- 9 Be ill
- 10 Artificial language
- 11 Uncooked



- 16 Sum up
- 18 Liquid measure
- 20 Cry of cow
- 22 Proverb
- 23 Pertaining to the cheek
- 24 Negative suffix
- 26 Without end
- 28 Either
- 29 Part of flower
- 30 Dropsy
- 32 The ural
- 33 Grass mowed and cured for fodder
- 35 Bivalve mollusks
- 39 Chinese distance measure
- 40 Attempt
- 41 Deciliter: abbr.
- 44 Unusual
- 46 Unmarried woman
- 48 Rodents
- 49 Tattered cloth
- 50 Rubber tree
- 51 Deposit
- 52 Suitable
- 54 Speck
- 55 Female sheep
- 56 Crimson
- 59 Babylonian deity

COLLEGE PRESS SERVICE



Typist Wanted

The Carbon is looking for one or two persons to act as a grammar resource and as a typist for the newspaper.

To be eligible one must be WordPerfect literate, have a good command of English, and also available for work study compensation (possibly 3 to 6 hours weekly).

For more information contact:

Brian Adler, ext. 280

Dallice Hesselgrave, ext. 671

Knightly notes

The Writing Center is now open! It is located in Kavanaugh Hall and is open 12:00-6:00 Monday -Thursday. If you need help come see us!

The Psychology Club/ Psi Chi meeting will be on Monday, September 10, 11:30-12:30 and repeating, 12:30-1:30 in the west dining room. Please bring your lunch, all Psych majors and minors, and join us. We will introduce the faculty, and a senior panel will discuss "What I Wish I Had Known When I Was a Freshman." Contribute to the annual planning of events, parties, speakers!

Beginning September 11 the following offices will be open until 7:00 p.m. on the following days: Assistant Dean for Academic Affairs, including business for the Registrar's Office (Tuesday only); Business Office (Tuesday and Wednesday); and Financial Aid Office (Tuesday only). Other times can be made by appointment by calling the office director during the day.

There are still spaces available for the Stratford Canada Theatre trip scheduled for October 25-26-27-28, 1990. Those who have reservations must pay the final \$100 before September 14. The total cost of the trip for Marian students is \$130 and includes four plays, three nights accommodations and transportation. Please contact Dr. Jack Sederholm, Fisher Hall 12 or ext. 292.

if you are interested in a London theatre trip over Spring Break, 1991 please contact Dr. Jack Sederholm, Fisher Hall 12, ext. 292. Cost is \$850.

Notice to all COMMUTER STUDENTS. Please stop by the Dean for Student Affairs Office, Room 111 Marian Hall to receive the Code of Student Rights and Responsibilities and Campus Life (events calendar).



Parking and Traffic Regulations

1. All students (including ELS), faculty and staff are required to register all vehicles which are operated and parked on campus.
2. The sticker is valid through the entire academic year and may be purchased at the business Office during registration.
3. The cost of the parking sticker for students is \$10.00 per automobile or motorcycle.
4. Stickers must be placed on the rear bumper, left side of your motor vehicle.
5. ELS students who enter the Language Center during the period May 1--August 15 are required to register their vehicle at the \$10.00 per vehicle rate. In August, when new academic school year stickers are sold, they will be replaced at no cost.
6. Auto registration stickers for summer students are \$5.00 per vehicle or motorcycle.
7. a. The speed limit on campus is 15 mph.
b. Parking is permitted ONLY where parking lines are painted or where signs are posted designating a parking area. Student spaces are designated by YELLOW lines. Faculty and staff spaces are painted RED; visitor spaces are painted WHITE. Students are not permitted to park in designated faculty-staff parking areas, handicapped spaces, spaces designated for college vehicles or guest/visitor parking spaces.
c. Vehicles are not permitted in the lake area or lower ballfield area.
d. There is no parking along campus roadways or on lawn or grass areas at any time.
8. Violations of these traffic and parking privileges shall result in the following fines and/or actions:
 - a. Fines (each ticket \$5.00)
 - b. Towing of vehicles at owner's cost for:
 - (1) Unregistered vehicles
 - (2) Illegal parking (fire lanes, loading zones; entrances to buildings.) Under these circumstances no warning ticket will be issued.
 - c. Any damage to College property done by vehicle will be paid for by the owner of the vehicle.
 - d. Anyone who regularly abuses their driving privileges will be subject to a hearing by the Traffic Committee.
9. Traffic committee: The Traffic committee is empowered to hear appeals of traffic and parking violations; it may suspend or revoke parking and driving privileges on campus and assess monetary fines no to exceed \$100.00 for each offense.
10. Appeals: Appeals of traffic and parking violations must be filed in the Office of the Dean for Student Affairs within ten (10) days of ticket issuance.

Parking maps should be picked up at the security office.