

Secondary Characteristics of Side Effects Experienced in Pediatric Oncology Patients Receiving the COVID-19 Vaccine



Whitney Carroll MS-II¹, Seethal A. Jacob MD, MS², Jennifer A. Belsky DO, MS²
¹Marian University College of Osteopathic Medicine
² Division of Hematology/Oncology, Riley Hospital for Children, Indianapolis, IN

Background

- The Coronavirus Disease 2019 (COVID-19) pandemic led to the swift development of multiple vaccines
- Common side effects of COVID-19 vaccination include lymphadenopathy and fever in healthy adults
- Fever and lymphadenopathy are concerning symptoms in children with cancer
- It is important to distinguish features of reactive lymphadenopathy to the vaccine versus concern for malignant tissue
- Vaccine hesitancy within the pediatric and adolescent hematology/oncology communities stems in part by a lack of data
- This study investigated the side effects of the COVID-19 vaccination in children with cancer and Sickle Cell Disease (SCD)

Methods

- Retrospective chart review utilizing patient data from Riley Hospital for Children
- Patients 0-30 years of age with cancer or SCD, diagnosed from January 2017 – December 2020
- Received any COVID-19 vaccination as of September 1, 2021

Results

Table 1: Demographics of Children with Cancer and Sickle Cell Disease

| | Cancer Cohort | SCD Cohort |
|---------------------------------|---------------|------------|
| Characteristic | N (%) | N (%) |
| Unique Patients | 122 | 37 |
| Male Sex | 68 (55.7) | 15 (40.5) |
| Median age years (range) | 18 (12-30) | 17 (13-20) |
| Race | | |
| White | 112 (91.8) | 1(2.7) |
| Asian | 5 (4.1) | 0 |
| Black | 4 (3.3) | 36 (97.3) |
| Pacific Islander | 1 (0.8) | 0 |
| Diagnoses | | |
| Solid Tumor | 33 (27.0) | |
| Leukemia | 25 (20.1) | |
| CNS ³ Cancer | 25 (20.1) | |
| Lymphoma | 22 (18.0) | |
| SCD – HBSS | | 24 (64.9) |
| SCD – HBSC | | 12 (32.4) |
| Other | 17 (13.9) | 1 (2.7) |

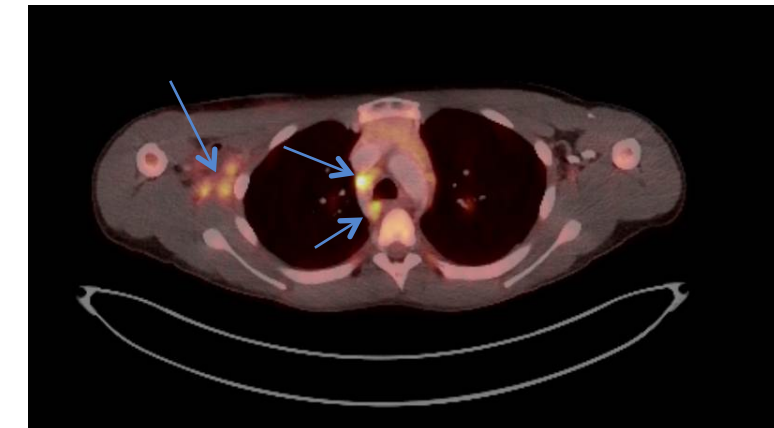
³Central Nervous System

Table 2: COVID-19 Vaccine Side Effects in Patients with Cancer and Sickle Cell Disease

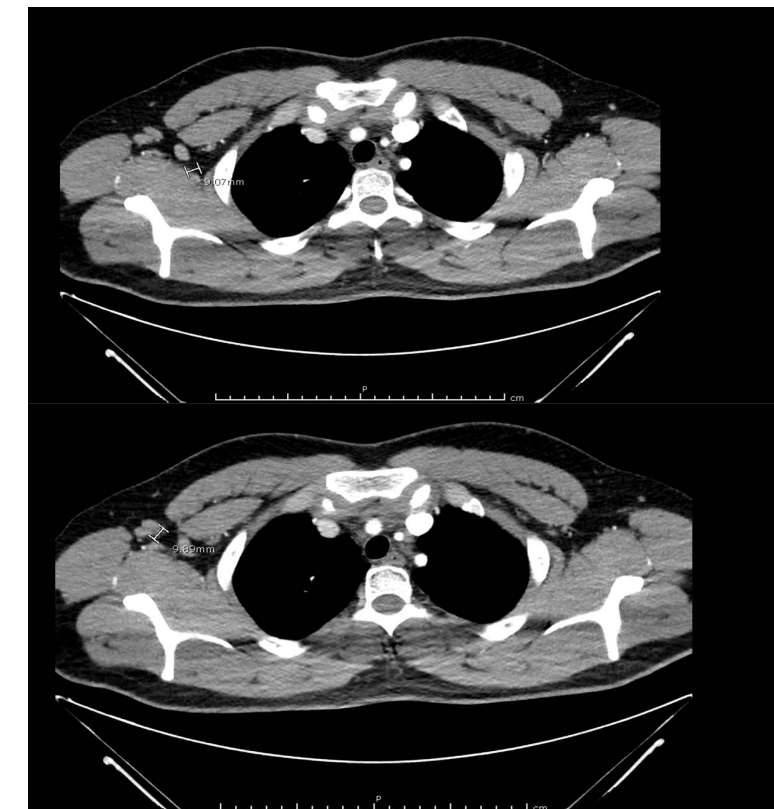
| Characteristic | Cancer Cohort N (%) | SCD Cohort N (%) |
|---|---------------------|------------------|
| Unique patients with reaction | 3 (2.5) | 3 (8.1) |
| Reported side effects with 8 weeks | | |
| Fever | 1 (0.82) | 0 |
| Chills | 1 (0.82) | 0 |
| Myalgia | 1 (0.82) | 0 |
| Headache | 1 (0.82) | 0 |
| Lymphadenopathy | 1 (0.82) | 0 |
| Other | 0 | 3 (8.1) |
| Routine Surveillance Imaging | 47 (38.5) | 11 (29.7) |
| Incidental Lymphadenopathy | 1 (0.82) | 0 |

Lymphadenopathy Results

Patient A: Symptomatic lymphadenopathy detected on PET scan 4 days after 1st dose of Pfizer



Patient B: Incidentally detected lymphadenopathy on routine CT scan 1 day after 2nd dose of Pfizer



Discussion and Next Steps

- The majority of pediatric patients with cancer or SCD who received the COVID-19 vaccination had few side effects
- Occurrence of side effects were reflective of those seen in the general population
- Hematologists/oncologists should be aware of the post-vaccine course for patients to appropriately guide patients and families
- Future studies should continue to track and report side effects of COVID-19 vaccination

References and full affiliations available:



SCAN HERE